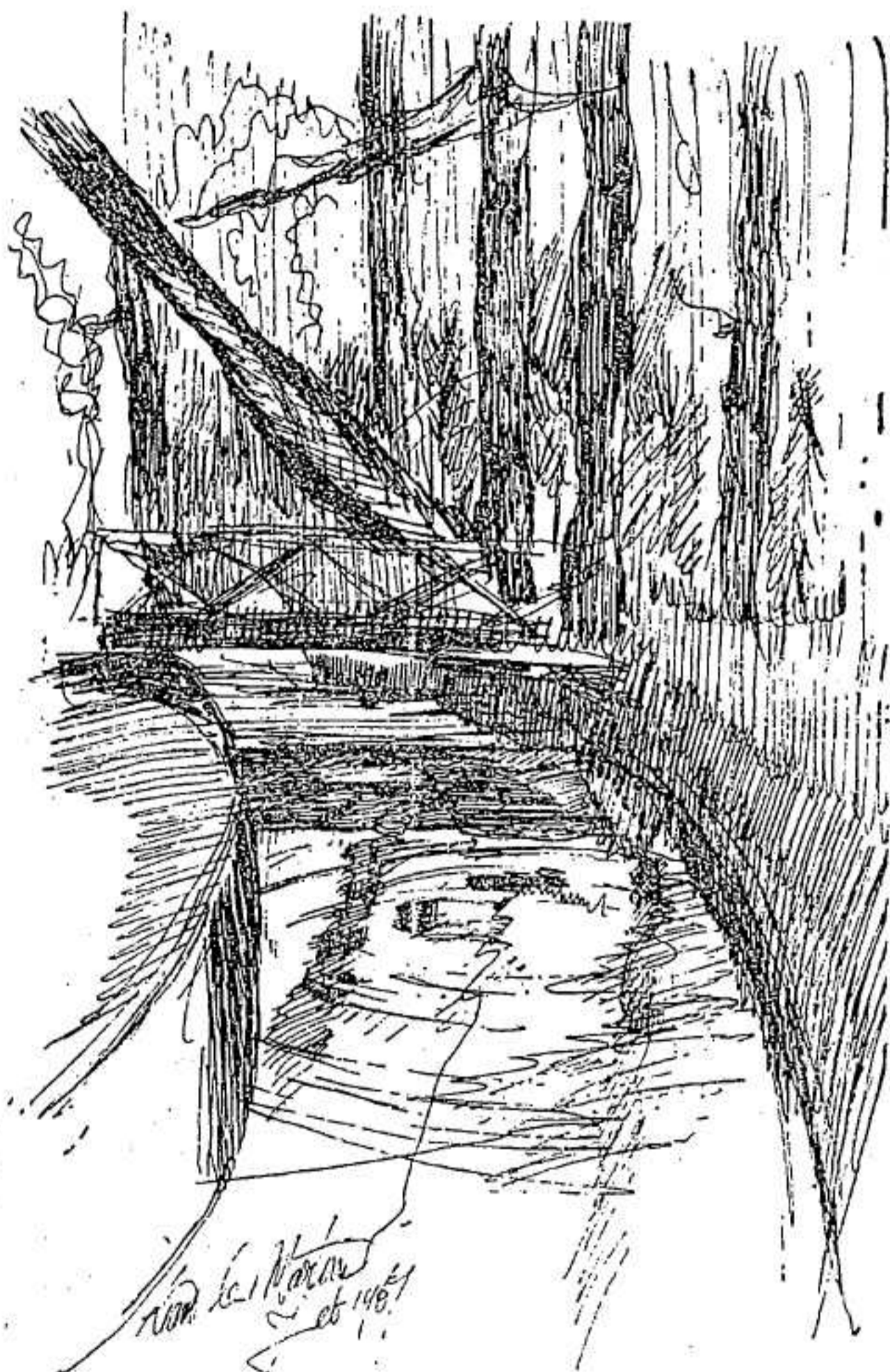


# Know your Dublin

Sketches by LIAM C. MARTIN

Text by J. B. MALONE



## THE PODDLE AT MOUNT ARGUS

The Poddle's principal claim to fame is that its waters once formed the moat of Dublin Castle, and provided some part of the water supply for the ancient city. To-day the Poddle is one of Dublin's hidden rivers, travelling underground to join the Liffey, almost all the way from where Liam Martin has sketched it, in the pleasant grounds of Mount Argus.